

# Swing manouche

1. Les copains d'abord -Brassens
2. La Foule
3. Blues en Mineur
4. Honeysuckle Rose
5. Lulu Swing
6. On the Sunny Side Of The Street
7. Sweet Georgia Brown
8. Bossa Dorado
9. Out Of Nowhere
10. Puttin On The Ritz -
11. La Partida— '(Petite valse vénézuelienne
12. Made For Wesley - J Rosenberg
13. Douce ambiance -
14. Coquette
15. Daphné - Django
16. Lady Be Good - Gershwin
17. Pourparler - Romane
18. Mire Pral
19. Bare Necessities - Disney
20. Night And Day - Cole Porter
21. Per Na Colo - Biel Ballester
22. Chez Jaquet
23. Swing Gitan - Trad Manouche
24. Les Yeux Noirs - Trad Russe
25. Troublant Bolero—Django Reinhart
26. Minor Swing - Django Reinhart
27. For Sephora - Stocchelo Rosenberg.
28. All Of Me

# Les Copains D'abord - Brassens

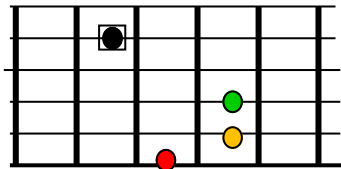
Tempo : 185

<b>Intro</b>	<b>C#-5sus4/C#7</b>	<b>F#m/Gb9</b>	<b>Dm9/A#°</b>	<b>D6/9*</b>
	D(6/9)	%	%	%
	E7(9)	%	%	%
	G(6)	%	F#7	%
	Bm	E7 / A7	D(Δ)	D(#9)/(A7)
<b>Outro x3</b>	Bm	E7 / A7	D(Δ)	F#7(x2)**

\* descente/montée gamme de ré pour lancer

\*\* ou fin tex avery

6



C#7-5+4

# La Foule

¾ ♩=160 STYLE MUSETTE

TONALITÉ:

**A** **B**

INTRO, INTERLUDE ET CODA

:	A <sub>m</sub>	%	E <sub>m</sub>	%	B <sup>7</sup>	%	E <sub>m</sub>	%	:
---	----------------	---	----------------	---	----------------	---	----------------	---	---

**A**

E <sub>m</sub>	C	A <sub>m</sub>	%	D <sup>7</sup>	%	G	%
B <sup>7</sup>	%	E <sub>m</sub>	%	C <sup>7</sup>	(F# <sup>7</sup> )	B <sup>7</sup>	%
E <sub>m</sub>	C	A <sub>m</sub>	%	D <sup>7</sup>	%	G	%
B <sup>7</sup>	%	E <sub>m</sub>	%	C <sup>7</sup>	B <sup>7</sup>	E <sub>m</sub>	%

**B**

D <sup>7</sup>	%	G	%	D <sup>7</sup>	%	G	%
B <sup>7</sup>	%	E <sub>m</sub>	%	C <sup>7</sup>	F# <sup>7</sup>	B <sup>7</sup>	%
D <sup>7</sup>	%	G	%	D <sup>7</sup>	%	G	%
B <sup>7</sup>	%	E <sub>m</sub>	%	C <sup>7</sup>	B <sup>7</sup>	E <sub>m</sub>	%

# Blues en mineur - Django

Tempo : 115

<b>A</b>	Gm6	%	%	%
	Cm6	%	Gm6	%
	Eb7	D7	Gm6	D7

Progressions d'accords possibles

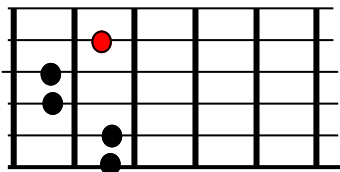
Passage de Gm6 à Cm6 : Gm6 - Am6- Fm7—Cm6

# Honeysuckle Rose

A-A1-B-A

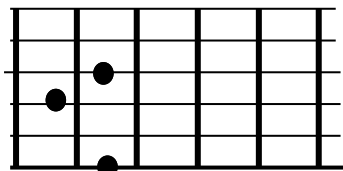
<b>Intro</b>	oo_o_oo_o_o_oo			
<b>A</b>	Gm/C7	%	%	%
	F/F/A	Bb/B°	F/C	Aø / D7
<b>A1</b>	Gm/C7	%	%	%
	F/F/A	Bb/B°	F/C	%
<b>B</b>	F7	%	Bb6	%
	G7	%	C7	%
<b>A</b>	Gm/C7	%	%	%
	F/F/A	Bb/B°	F/C	Aø / D7

8



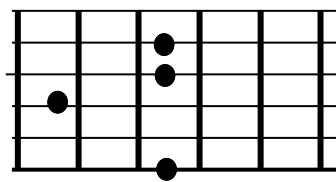
F6/9

7

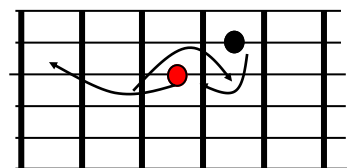


B°

7



Am+5 (=Dm9 + quinte)



- Idée de chorus sur le A > lick **Gm7**, puis même chose en Bbm7 12
- Sur le B, même lick en C, puis D#

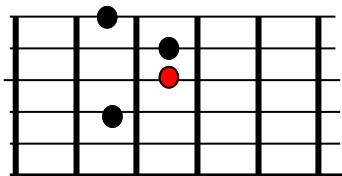
# Lulu Swing - Lulu Reinhart

A-A-B-A

<b>Intro</b>	D6/9 (*)	A+	D6/9	A+
<b>A</b>	D6/9	%	E7	%
	Em7	A13b9	D6/9/(Bm7)	(Em7)/A13b9
<b>B</b>	G	G#°	D6/9	D7
	E7	%	Em7	A13b9
<b>Outro</b>	D7b5			

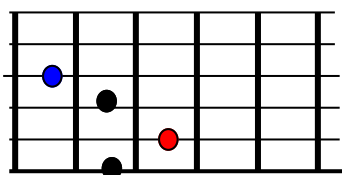
Structure : Thème Magali, Impro Frantz, Nappes Guy + B Greg, Impro Greg, Thème tous solistes ; Outro : stop simple

5



A(5)+

10



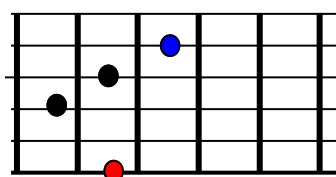
D7b5 (=D7#11)

• =9

(\*) Substitutions

D6/9 > DΔ

6

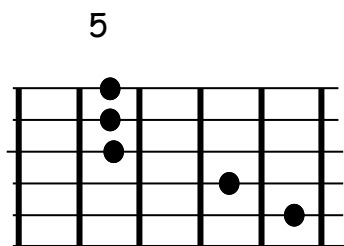


A13/b9

## On The Sunny Side Of The Street

<b>Intro</b>	Dm9 / G7	Em9/A7	Dm9 / G7	C6
<b>A</b>	C6	E7	FΔ	G7/G#° (*)
	Am7	D7(13)/Eb°	Dm7/G7	C6/G7
<b>A'</b>	C6	E7	F6	G7/G#°
	Am7	D7	Dm7/G7	C6/
<b>B</b>	C7	(Gm7) / C7	F	F(F/E7/Eb7)
	D7	%	G7	G7(C#°)
<b>A</b>	C6	(Bø)/E7	FΔ	G7/G#°
	Am7	D7	Dm7/G7	C6/G7
<b>A Outro</b>	C6	(Bø)/E7	FΔ	G7/G#°
	Am7	D7	Dm7/G7	Em9#/A7
	Dm9 / G7	C6		

Structure : Thème Magali ; Impro1 Frantz ; Impro2 Greg ; Nappes spéciales ;  
Thème improvisé Guy avec outro.



Renversement FΔ

(\*) Possibilité de substituer

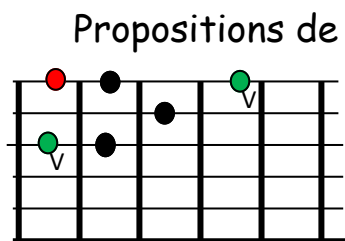
G7 avec Bø et

G#° par E7

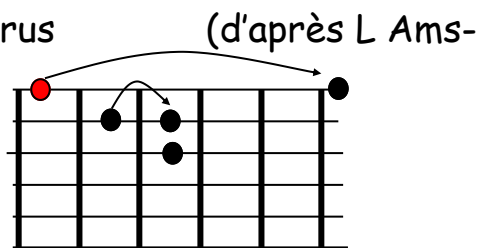
# Sweet Georgia Brown - Maceo Pinkard

	E7	%	%	%
	A7*	%	%	%
	D7	%	%	%
	G6	%	%	B7
	E7	%	%	%
	A7	%	%	%
	Em	B7	Em	B7
	G / F#7	F7 / E7	Am7 / D7	G (B7)
Outro x 3	G / F#7	F7 / E7	Am7 / D7	G 6

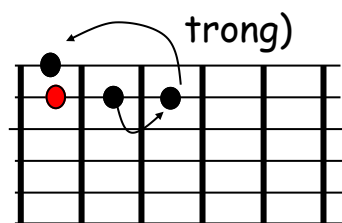
Structure : Thème tous les solistes ; Impro 1 Frantz ; Impro2 Greg ; Thème tous les solistes ; Outro : 3 fois la dernière ligne



Position D puis **Dm**  
en rajoutant +5 à  
jouer en E, Em, D, Dm,  
puis G



Arpèges de E, A,  
D, G, début en case  
**7** puis en case 12, etc



Position pour  
riff rapide, basé  
sur l'accord E,  
puis **Em**, D, Dm ;  
idem blues.

\* Remplacer A7 par C#ø possible et pratique et joli.



## Bossa Dorado

<b>Intro</b>	Dm	Dm+5	Dm6	Dm+5
	Dm	Dm+5	Dm6	A7
<b>A</b>	Dm7	%	E7	%
	Eø	A7	Dm7	Eø / A7 *
	Dm7	%	E7(b9)	%
	Eø	A7	Dm7	%
<b>B</b>	Aø	D7	Gm7	%
	E7	%	Eø	A7
	Dm7	%	E7(b9)	%
	Eø	A7	Dm7	E / A7
<b>Struct</b>	<b>A-B-A-</b>			

Eø > Gm6

Aø > Cm6

- option : Bb°/C#°/E°

Chorus : Arpèges Dm, E7, A7

Penta Dm

## Out Of Nowhere

<b>Intro</b>	G6 / E9	Am7 / D9	G6 / E9	Am7 / D9
<b>A</b>	G6	%	Bbm7	Eb9
	G6	%	Bm7	E7(b9)
	Am7	E7	Am7	%
	Eb9	%	Am7	D7b9 / D7
<b>B</b>	G6	%	Bbm7	Eb9
	G6	%M	Bm7	E7(b9)
	Am7	E7	Am7	Cm6
	Bm7 / Bb°	Am7 / D9	G6	A7 / D9
<b>Struct</b>	<b>A-B-A-</b>			

## Puittin ' On The Ritz

<b>Intro</b>	G6 / E9	Am7 / D9	G6 / E9	Am7 / D9
<b>A</b>	Gm6	%	%	%
	D7	%	Gm6 / F	Eb7 / D7
	Gm6	%	%	%
	D7	%	Gm6 / Am6	Gm7 / Abø
<b>B</b>	Cm6	%	F7	%
	Bb6	%	Eb7	D7
	Gm6	%	%	%
	D7	%	Gm6 / Am6	Gm7 / Abø
<b>Struct</b>	<b>A-B</b>			

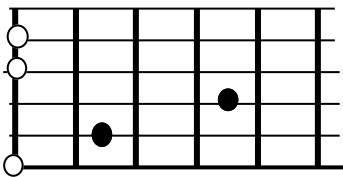
Impro : penta Am (2) - Gamme diminuée de DO,  
pour aller avec D7

## La Partida

# Made For Wesley - J Rosenberg

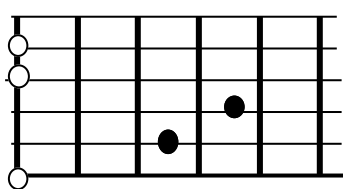
Intro x2	Em9	%	CΔ/(E)	%
Outro x2	Am6	%	Bm7	B7
	Em	%	CΔ	%
	Am7	D7	GΔ	G#°
	Am7	B7	Em	%
	C7	B7	Em	B7
Struct				

6

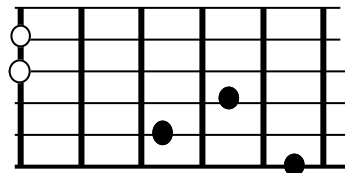


Em

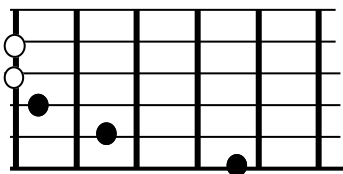
3



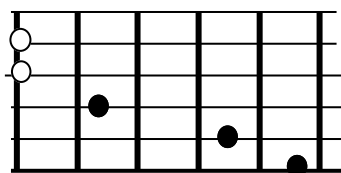
C



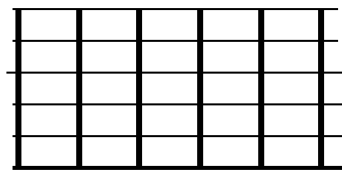
Am



Bm7



B7



Chorus : Penta Em, Em, ; cocottes C7, B7

## Douce ambiance - Django

<b>Intro</b>	D7	EbΔ	Em7(open)	F6(open)
	Bb	EbΔ	Am11	Ab°
<b>A</b>	Gm6	D7(/A)	Gm6/F7(/C)	Bb / B°
	Cm	Gm	Ab7	D7
<b>A'</b>	Gm6	D7(/A)	Gm6 /F7(/C)	Bb / B°
	Cm	Gm6	Eb7/D7	Gm6
<b>B</b>	Abm(6)	%	%	
	Am(6)	%	F7.../E7/Eb7	...Db7/D7
<b>Outro x 3</b>	D#7	D7	Gm6	
<b>Struct</b>	<b>AA'BA'</b>			

5

D7

3

EbM7

3

F6

5

Bb

3

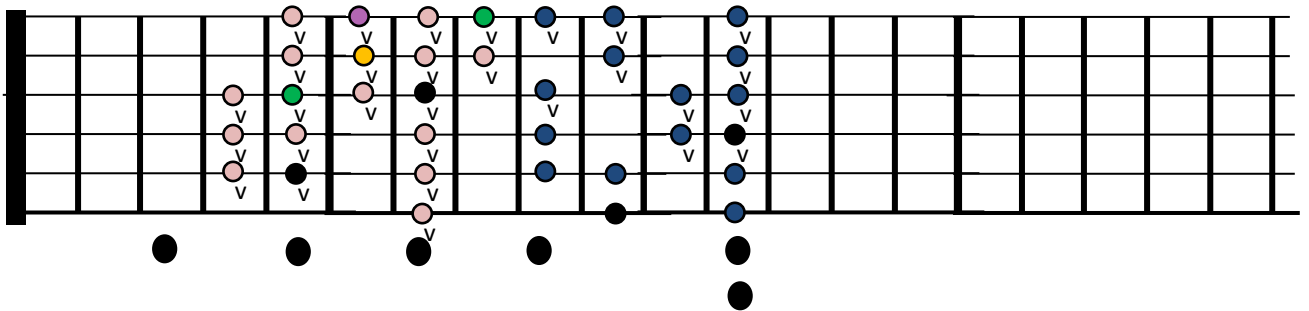
Am11

3

Ab°

# Coquette (D) David Daniel Plaquin

A	D6/9	D6/9 / F°	Em9	A7
	Em9	A7	D6/9 / F°	Em9/A7
	D6/9	D/F°	Em9	A7
	Em9	A7	D6/9	%
B	D7/9	%	G6	%
	E7/9	%	A7/Ab7	A7
	D6/9	D6/9 / F°	Em9	A7
	Em9	A7	D/F°	D6/9
Struct	A-B-A-B			



Chorus

DM7-Em-E7-GM7-E7-A

Penta Bm

Gamme D

Intro : A#/A/Ab/A x 2

# DAPHNÉ

DJANGO REINHARDT - 1937

4/4 ♩=185 **STYLE MANOUCHE**

TONALITÉ: D

**A A B A**

D Bm7 A7	Em7 A7	D Bm7 A7	Em7 A7	D D7	G G#o	D A7	D A7
D Bm7 A7	Em7 A7	D Bm7 A7	Em7 A7	D D7	G G#o	D A7	D Bb7
Eb Cm7 Bb7	Fm7 Bb7	Eb Cm7 Bb7	Fm7 Bb7	Eb Cm7 Bb7	Fm7 Bb7	Eb A7	A7
D Bm7 A7	Em7 A7	D Bm7 A7	Em7 A7	D D7	G G#o	D A7	D

## Intro

D9
D7
G
G#o
D9
A7
D9



# LADY BE GOOD

G. GERSCHWIN

♩=160 STYLE SWING

TONALITÉ: G ▾ Imprimer

G	C <sup>7</sup>	G	G <sup>7</sup> / <sub>B</sub> B <sup>b</sup> °	Am	D <sup>7</sup>	G	D <sup>7</sup>
G	C <sup>7</sup>	G	G <sup>7</sup> / <sub>B</sub> B <sup>b</sup> °	Am	D <sup>7</sup>	G	%
C	C <sup>#</sup> °	G	E <sup>7</sup>	A <sup>7</sup>	%	D <sup>7</sup>	%
G	C <sup>7</sup>	G	G <sup>7</sup> / <sub>B</sub> B <sup>b</sup> °	Am <sup>7</sup>	D <sup>7</sup>	G	(D <sup>7</sup> )

## Chorus

G6 (Corde Ré)-D7

C-C#-G-A7-D7

Penta Em (case 12 et 1)

# POUR PARLER

ROMANE

♩=0 STYLE SWING

TONALITÉ:  [Imprimer](#)

F <sup>7</sup>	E <sup>7</sup>	F <sup>7</sup>	E <sup>7</sup>	A <sub>m</sub>	%	%	%
F <sup>7</sup>	E <sup>7</sup>	F <sup>7</sup>	E <sup>7</sup>	A <sub>m</sub>	%	%	%
E <sup>ø</sup>	A <sup>7</sup>	D <sub>m</sub> <sup>7</sup>	%	D <sup>ø</sup>	G <sup>7</sup>	C	E <sup>7</sup>
F <sup>7</sup>	E <sup>7</sup>	F <sup>7</sup>	E <sup>7</sup>	A <sub>m</sub>	%	%	%

## Mire Pral -

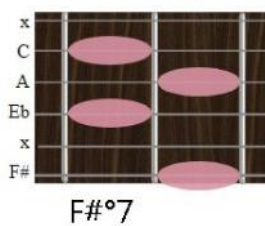
<b>Intro</b>	<b>Gm6</b>	<b>%</b>	<b>%</b>	<b>%</b>
<b>A</b>	<b>Gm6</b>	<b>%</b>	<b>Cm6</b>	<b>%</b>
	<b>F7</b>	<b>%</b>	<b>Bb6</b>	<b>D7</b>
	<b>Gm6</b>	<b>%</b>	<b>Cm6</b>	<b>%</b>
	<b>Eb9</b>	<b>D7</b>	<b>Gm6</b>	<b>%</b>
<b>B</b>	<b>F7</b>	<b>%</b>	<b>Bb6</b>	<b>%</b>
	<b>F7</b>	<b>%</b>	<b>Bb6</b>	<b>%</b>
	<b>Eb7</b>	<b>%</b>	<b>Ab6</b>	<b>%</b>
	<b>Eb7</b>		<b>D7 / Eb7</b>	<b>D7 / Eb7</b>
<b>C</b>	<b>Gm6</b>	<b>%</b>	<b>Cm6</b>	<b>%</b>
	<b>Eb9</b>	<b>D7</b>	<b>Gm6</b>	<b>D7 / Eb7</b>
<b>Struct</b>	<b>A-B-C</b>			

Tempo : 160

## Bare Necessities - Disney soundtrack

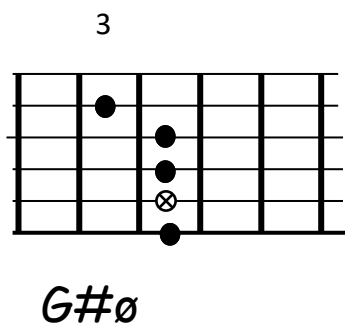
<b>Intro</b>			<i>G7</i>	<i>C / C7</i>
<b>A</b>	<i>C</i>	<i>C</i>	<i>F *</i>	<i>F7 *</i>
	<i>C</i>	<i>A7</i>	<i>D7</i>	<i>G7</i>
	<i>C</i>	<i>C7</i>	<i>F</i>	<i>F7</i>
	<i>C / A7</i>	<i>D7 / G7</i>	<i>C / F OC</i>	
<b>B</b>	<i>G7</i>	%	<i>C</i>	%
	<i>G7</i>	%	<i>C</i>	<i>C / C7</i>
	<i>F</i>	<i>Fm</i>	<i>C</i>	<i>D7</i>
	<i>C / A7</i>	<i>D7 / G7</i>	<i>C / F</i>	<i>C</i>
<b>Outro</b>				
<b>Struct</b>	<b>A-A-B-</b>			

(\* Option : remplacer F par F7 et F7 par F#° (plus joli)



## Night And Day - Cole Porter (D)

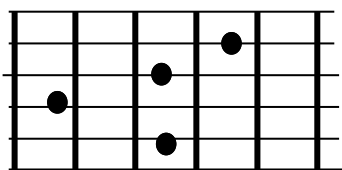
<b>Intro</b>				
<b>A</b>	Gm6	A7	DΔ	%
	Gm6	A7	DΔ	%
	G#ø	Gm7	D/F#	F°
	Em7 <sup>(9)</sup>	A7	DΔ	%
<b>B</b>	FΔ	%	DΔ	%
	FΔ	%	DΔ	%
	G#ø	Gm7	D/F#	F°
	Em7 <sup>(9)</sup>	A7	DΔ	%
<b>Outro</b>				
<b>Struct</b>	<b>A-A-B-</b>			



# Per Na Colo - Biel Ballester

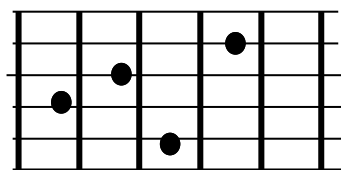
<b>Intro</b>	G	Cm6	G	Cm6
	G	Cm6	D7	%
<b>A</b>	G	%	Cm6	%
	G	%	Cm6	%
	Em	EmΔ	Em7	A7
	Am7	%	D7	%
<b>B</b>	Gm	Gm7	Cm7	D7
	Gm	Gm7	Cm7	D7
	G7	%	Cm7	%
	Ab	%	D7	%
<b>Outro</b>	Am7	%	D7	%
<b>A +</b>	Am7	%	D7	%
	G (après)			
<b>Struct</b>	<b>Intro</b>	<b>(A-A-Bx3)</b>	<b>A-Outro</b>	

7



Em7

7

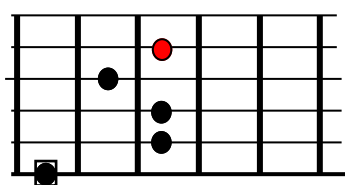


A7

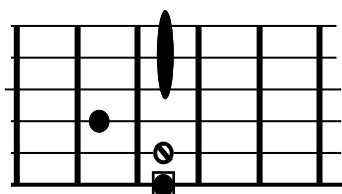
# Chez Jaquet

Tonalité : D—Valse en Majeur

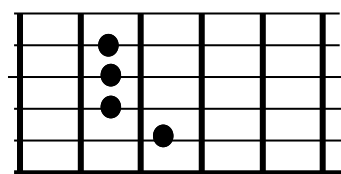
A	D6 <sup>9</sup>	A7 <sup>13b</sup>	D6 <sup>9</sup>	%
	D/F#	F# <sup>o</sup>	Em7	%
	F#7	%	Bm7	%
	E7	%	A7	A7 <sup>13b</sup>
	D6 <sup>9</sup>	A7 <sup>13b</sup>	D6 <sup>9</sup>	%
	B7	%	Em7	%
	G6	G# <sup>o</sup>	D6/A	B7
	E7 <sup>9</sup>	A7	D6 <sup>9</sup>	A7 <sup>13b</sup>
B	E7 <sup>9</sup>	%	A6	%
	E7 <sup>9</sup>	%	A6	%
	F#7	%	Bm7	%
	G#7	%	C#m	%
	E7 <sup>9</sup>	%	A6	%
	E7 <sup>9</sup>	%	A6	%
	E7 <sup>9</sup>	%	A6	%
	Bm7	E7 <sup>9</sup>	A6	%
Struct	A-A-B-B-A			



Ab6



Cm6



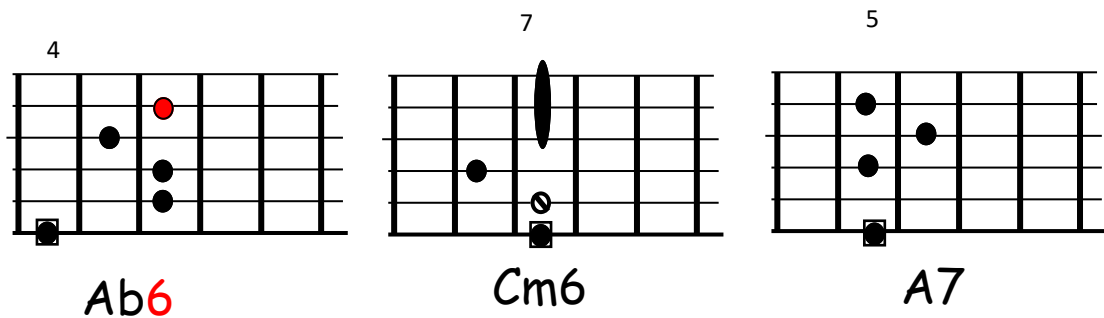
D/F#

# Swing Gitan - Trad Manouche

Tonalité : Gm

Gm6	%	A7	%	Cm6	D7	Gm	%
Ab6	%	Gm	%	A7	%	D7	%
Gm6	%	A7	%	Cm6	D7	Gm	%
Ab6	%	Gm	%	A7	D7	Gm6	(D7)

Nb : Cm6 peut être remplacé par D7





## Les Yeux Noirs - Trad Russe

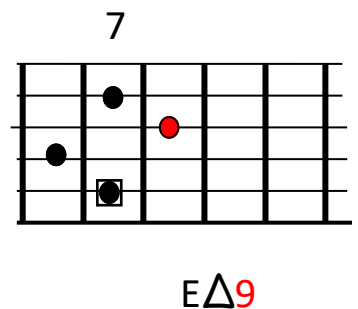
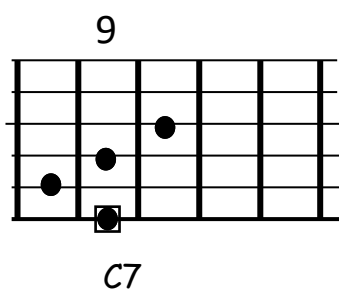
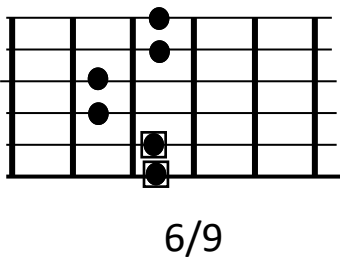
Tonalité : F

	A7		%		Dm		%	
	A7		%		Bb		%	
	Gm		%		Dm		%	
	Bb7		A7		Dm		%	

# Troublant Bolero - Django Reinhart

Intro		E7(#9)		Eb7(#9)
		E7(#9)		Eb7(#9)
A	EΔ(9)	%	Em9	A7(13)
	D6/9	C7	B7C7/B7	C7/B7 / C7
	EΔ(9)	%	Em9	A7(13)
	D6/9	C7 / B7	EΔ	stop / (E7)
B	Am7	D7(9)	G° / GΔ	G#°
	Am7	F#ø	B7 / C7	B7 / C7
	EΔ(9)	%	Em9	A7(13)
	D6/9	C7 / B7	EΔ	(F7)
Outro	E	A7	E	A7 / E7
			B7 / C#m	D° / B7/D#

Option alternative pour la fin  
du A etou du B



## Minor Swing - Django Reinhart

Intro x 2	Am	Dm	Am	Dm
	Am	Dm	E7	(E7)
A	Am	%	Dm	%
	E7	%	Am	%
	Dm	%	Am	%
	Bb7	E7	Am	E7

For Sephora - Stochelo Rosenberg

Intro	Em9+	EM7+	Em	Em6/Em6sus4
	Em9+	EM7+	Em	Em6/Em6sus4
A	Em7	Em7	Am7	Am7
	B7	B7	Em9	B7
	Em7	Em7	Am7	Am7
	B7	B7	Em9	E7
B	Am7	D7	GΔ	CΔ
	Fø	B7	Em	E7
	Am7	D7	GΔ	CΔ
	Fø	B7	Em	E7
Outro	Em	B7	...	

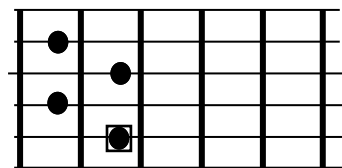
F#ø=Am basse C;

# All Of Me —

Intro			C6 / C#°	Dm7 / G7
A	CΔ	%	E7	%
	A7	%	Dm6	%
	E7	%	Am	%
	D7	%	Dm7	G7
	CΔ	%	E7	%
	A7	%	Dm6	%
	F	Fm7 (*)	C	A7
	Dm7	G7	C6 / C°	Dm7 / G7
Outro1		Em A7	D7 G7	
Outro2		C / C7	F / Fm	G7 / C

3

Fm7 peut être remplacé par B7(m9)



B7 (m9)

Fin